

I-SAD 19"

Modular IP Security Access Device



Introduction

The I-SAD 19" device is a modular telecontrol system that transmits alarm signals, switching operations and telemetry data to a dedicated central network management center via copper or fiber optic lines. The IP Network connection can be realized either via LAN ports or alternatively via GPRS (GSM) wireless link.

Three different modules are available for connection to various alarm systems, fire detection systems, sensors or other similar devices over parallel inputs and for signalling on parallel outputs.

The built in asynchronous RS-232 interface provides access to third party equipment. The management of the I-SAD 19" device is realized by SNMP, integrated WEB-Server and WEB Operator Interface (WEB-OPI) or local CLI.

Features

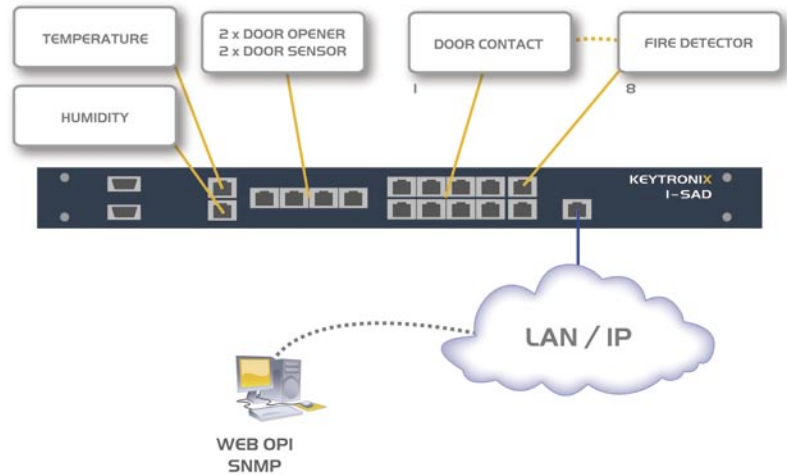
- 10/100 BT network interfaces
- 3 Slots for different Interfaces (slot no. 3 reserved for MGSM module only)
- Up to 16 parallel I/O ports
- Enables access to third party equipment via asynchronous RS232 port
- Management options: SNMP, DHCP client WEB-GUI, local CLI
- Up to 3x destination addresses per SNMP Trap are settable
- Free editable READ/WRITE communities
- Integrated wide range power supply (48V DC ... 230 V AC)
- Form factor: EIA19", 1RU
- Number of I/O can be increased by using of external Alarm Extender
- Line redundancy via optional GSM/GPRS transmission

I-SAD 19"

Modular IP Security Access Device

Application Example

I-SAD 19 "enables a remote control center to manage and supervise various in- and output criterias from subsidiaries.



Specifications

Management

- Network Management port (front access):
 - 10/100BaseTx (RJ45)
 - HTML based WEB-OPI
- SNMP V2c

Environmental

- Operating: -20 to +70°C
- Storage: -20 to +80°C
- Humidity: < 85% (30°C), non-condensing

Power

- Input Voltage: 42 V DC - 230 V AC
- Protection Class I

Physical

- Dimensions: 440 (W) x 44 (H) x 205 (D) mm
- Form Factor: EIA 19", 1RU

Temperature & Humidity I/Fs

- Top and bottom thresholds settable
- All connectors RJ45

M I/O Module

- 8 x parallel loop controlled Inputs
 - 8 x parallel bistable Outputs (potential free)
 - 2 Alarm Contacts
 - 1 x PDH Port
 - ITU-T G.703
 - Data rate: 64kbps
 - Codirectional, 120 Ohm
- All connectors RJ45



M I/O D-sub Module

- 8 x parallel loop controlled Inputs
- 8 x parallel bistable Outputs (potential free)
- 2 Alarm Contacts
- 1 x PDH Port
 - ITU-T G.703
 - Data rate: 64kbps
 - Codirectional, 120 Ohm



24 V Output for peripherals
DB37 Connector

MCC Module

- 2 x door lock sensor ports
- 2 x entry sensor ports
- All connectors RJ45

